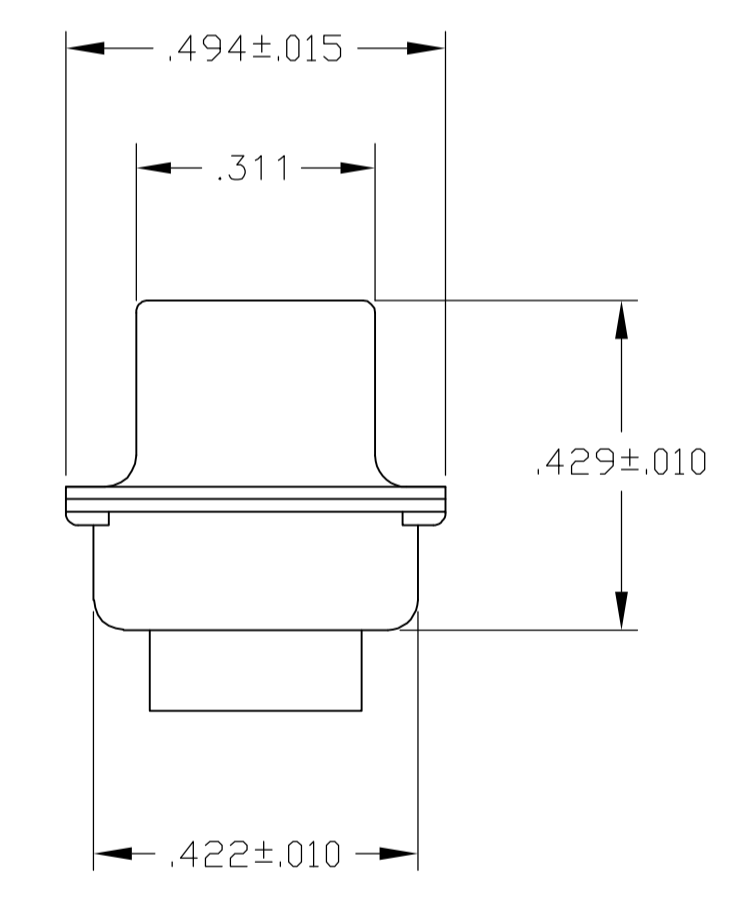
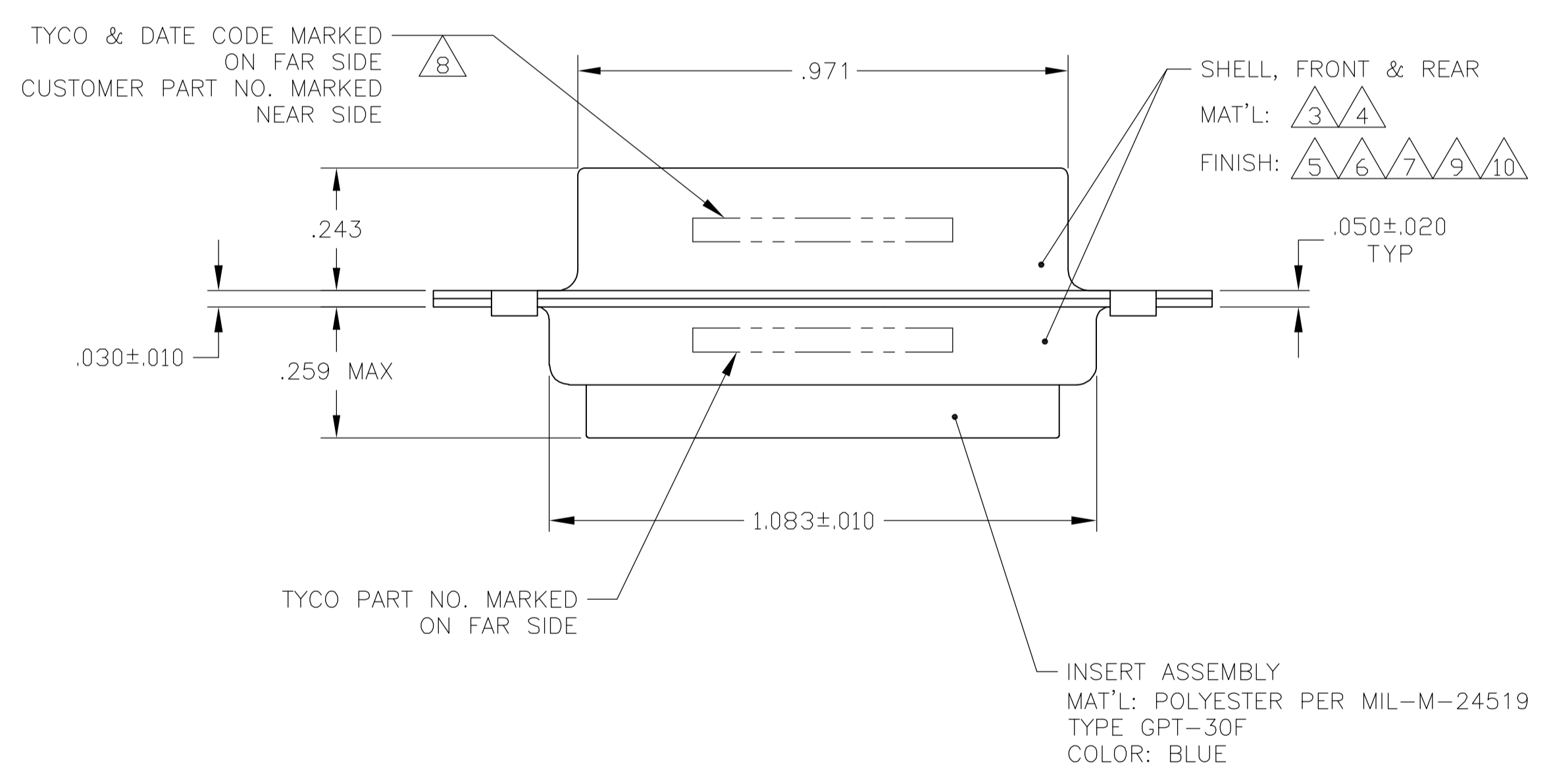
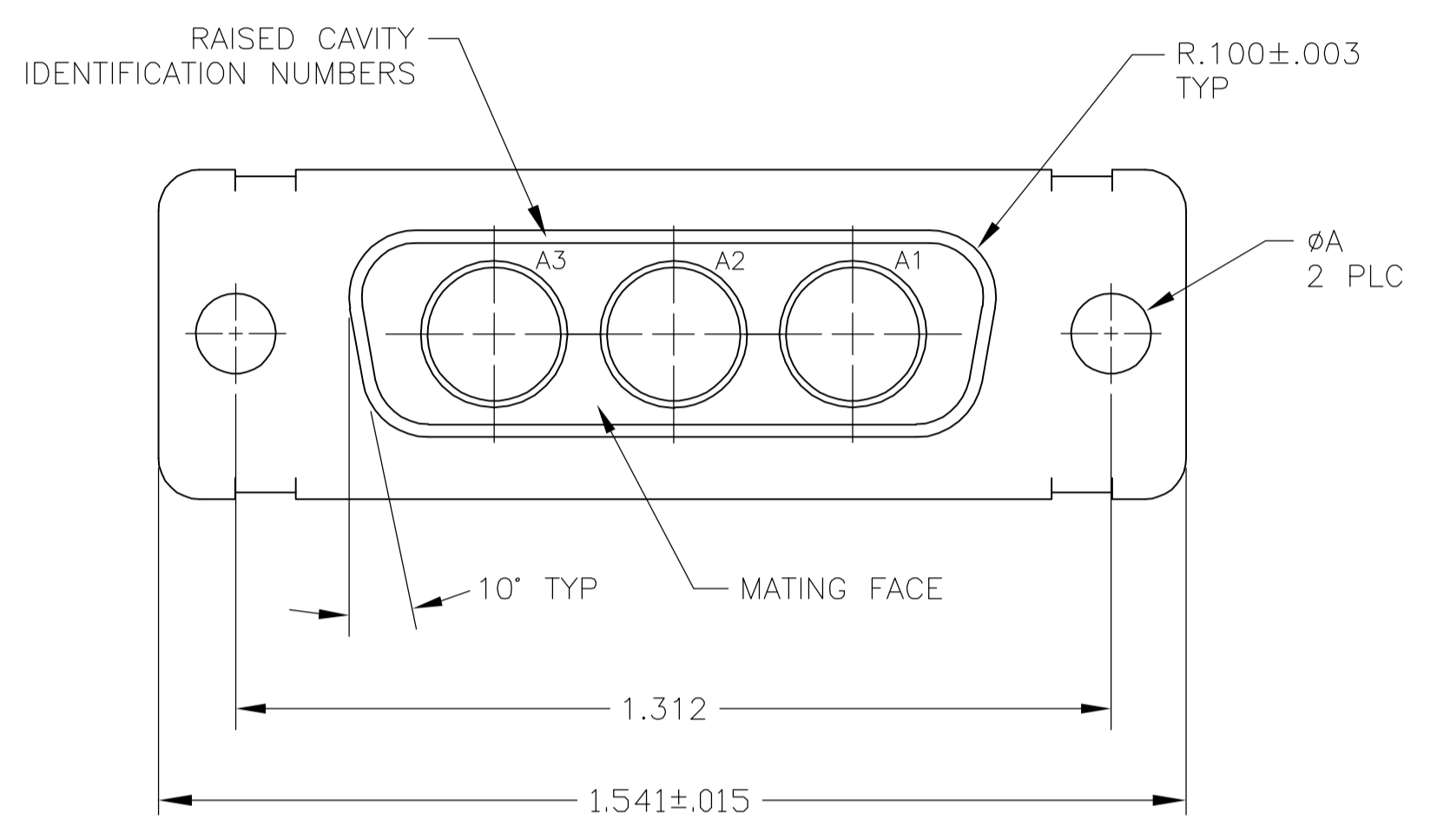


LOC		DIST		REVISIONS			
DF	DO	REV	DESCRIPTION	DATE	BY	APP'D	
L		1	REV PER ECO 06-027827	11-29-06	CT	DM	

- THIS RECEPTACLE WILL MATE WITH ANY 3C3, SIZE 2 PLUG IN AMPLIMITE SERIES.
- THIS CONNECTOR ACCEPTS (3) POWER 8, OR COAX SOCKET CONTACTS IN POSITIONS A1 THRU A3, PURCHASED SEPARATELY.
- STEEL PER ASTM-A-109.
- BRASS PER MIL-C-50 AND ASTM-B-36 UNS NO. C26000.
- FINISH: TIN PER ASTM-B-545 .000200 MIN THK OVER COPPER PER AMS2418 .000100-.000200 THK OR TIN-LEAD 93/7 .000200 MIN THK OVER COPPER PER AMS2418 .000100-.000200 THK.
- GOLD PLATED PER MIL-G-45204 TYPE II, GRADE C, CLASS 1 OVER COPPER PER MIL-C-14550, CLASS IV.
- FINISH: PLATED CADMIUM PER QQ-P-416, TYPE II, CLASS 2, OVER COPPER PER MIL-C-14550, CLASS IV.
- IF CUSTOMER PART NUMBER DOES NOT FIT ON FRONT SHELL NEAR SIDE, THEN SPLIT BETWEEN FRONT AND REAR SHELL FAR SIDE.
- FINISH: TIN PER ASTM-B-545 .000200 MIN THK OVER COPPER PER AMS2418 .000100-.000200 THK.
- FINISH: ZINC PLATE PER ASTM-B-633 .000200-.000400 THK WITH SUPPLEMENTARY CHROMATE (Cr3+).



REMARKS	øA	CUSTOMER PART NO.	PART NO.
3 10	.120	-	5-445705-4
3 9	.120	-	445705-7
4 6	.120	A010942-0042	445705-6
4 6 8	.120	B010942-0014	445705-5
3 7	.120	-	445705-4
4 6 8	.154	311P405-7S-B-15	445705-3
4 6 8	.120	311P405-7S-B-12	445705-2
3 5	.120	-	445705-1

THIS DRAWING IS A CONTROLLED DOCUMENT.

DIMENSIONS: INCHES	TOLERANCES UNLESS OTHERWISE SPECIFIED:	DRAWING NO	RESTRICTED TO
0 PLC ± -	1 PLC ± -	A1 00779	-
2 PLC ± -	3 PLC ± .005	445705	-
4 PLC ± -	ANGLES ± 0.30'		

DWG: C.C.THOMAS 01-NOV-88  
 CHK: A.FMADI 02-NOV-88  
 APP'D: A.FMADI 02-NOV-88  
 PRODUCT SPEC: RECEPTACLE ASSEMBLY AMPLIMITE 3C3 SIZE 2, SERIES 109, COAX MIX  
 APPLICATION SPEC: -  
 WEIGHT: -  
 CUSTOMER DRAWING: -  
 SCALE: 4:1 SHEET 1 OF 1 REV L